



The Flame

Bethel Lutheran Grade School
Weekly News



December 11th, 2009

Bethel Lutheran School

325 E Queenwood Rd

Ph: 266-6592 Fax: 266-8510

To submit an article to the Flame: Email your article to bethel1@mtco.com

***Please remember, articles must be submitted by Wednesday at noon in order to be published in Friday's edition of the Flame.

All articles must be emailed in either Microsoft Word or Microsoft Publisher format.

Articles submitted after the deadline will be published the in the following edition of the Flame.



*Christmas Break begins on December 21st, 2009
and school will resume on January 4th, 2010*

Attention Hot Lunch Patrons

IMPORTANT ANNOUNCEMENT

Because of some problems arising with our lunch service, Aramark Central Kitchens will no longer be accepting lunch orders after the due date. Mrs. Cooper has a deadline in which she has to place the food order for that month. After our order is placed, only enough food is sent to accommodate those who have pre-ordered and a few extras in case of a spill or lost lunch.

Lately, due to the amount of late lunch orders that have been accepted, we are running the risk of not having enough food for the older grades who eat later in the day.

If your lunch order is not in the Hot Lunch box located outside the school office by 3:00pm on the due date, it will be returned to you and your order will not be accepted for the month. You will have to make other arrangements (bringing a sack lunch from home) for your student until the next hot lunch order is placed the following month. **NO EXCEPTIONS!**

Thank you for your cooperation!



The Next BFF is January 6, 2010

Come to Bethel Lutheran Church on Wednesday, January 6 for a VBS family sing-along. Bethel's VBS music team will lead families in singing all the fun songs from Vacation Bible School. There will also be snacks, family devotion resources, and instruction on how families can use the Faith 5 to grow together in faith at home. Wednesday, January 6 from 6:30-8:00 p.m. Call Scott Brown at the church office for more details.

December Chapel Offering Telling the Next Generation: Children's Bibles for Southeast Asia

In the Buddhist stronghold of Southeast Asia, introducing the Christian faith is a difficult task.

Converts risk rejection from their families or, in some countries like Vietnam, intense persecution, even death. The Lutheran Heritage Foundation began work in Southeast Asia in Thailand, about a decade ago. Until then, there was no Lutheran church body in that country. LHF translators found that typically, younger people were the most open to learning more about Christianity.

As a result, in countries like Thailand and Cambodia, the Lutheran church today is made primarily of young people who are now beginning their own families. They are eager to pass on their faith in Christ to their children, but obstacles still exist.

There are no Lutheran children's books in their own languages.

No Lutheran Bible storybooks for children have been translated and published in Southeast Asia. Even if there were, a child's book would be an unaffordable luxury for many families.

LHF is helping to change this situation by translating and publishing *A Child's Garden of Bible Stories* into Thai, Khmer (spoken in Cambodia) and Bahasa Indonesia.

Please help support this important ministry through your child's chapel offering to Bethel Lutheran School



THE PANCAKE BREAKFAST COMMITTEE IS LOOKING FOR
ASSISTANTS TO SERVE IN AREAS SUCH AS TICKET SALES,
KITCHEN DUTY, AND VOLUNTEER RECRUITING.

ALL OF THESE POSITIONS HAVE COMMITTEE HEADS. WE ARE
JUST LOOKING FOR MORE PEOPLE
TO GET INVOLVED.

IT IS A GREAT WAY TO MEET OTHER PARENTS AND HELP
MAKE A DIFFERENCE IN YOUR CHILD'S SCHOOL.

IF YOU HAVE ANY QUESTIONS, PLEASE CONTACT
ANGIE BAILEY AT 369-0277 OR
AMY BRENNAN AT 387-2444.

BETHEL SCRIP HOLIDAY UPDATE

MONDAY, December 14, by 9am is the last day to order gift cards that we do not carry in stock to pick up at the school. **FRIDAY, December 18th**, by 9 am is the **LAST DAY TO ORDER**, those order will HAVE to be picked up at the church. The will be ready the following week.

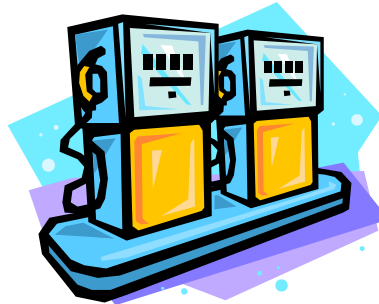
Lots of stocking stuffers & restaurant cards in stock!! The items listed on the order sheet will be available on a first come first serve basis until Christmas break.

Christmas is 14 DAYS away and you only have **2 weekends until Christmas.**



Do you hit the after Christmas sales?? Get all the scrip you need this week.

**Are you traveling over the holidays?
Get your gas cards.**



Still need a few things? Don't forget your reloadable right at the store. **Kroger has a great selection of gift cards** very various stores and restaurants that aren't available through the SCRIP program. Buy them at Kroger and earn 3% back on your purchases.



Kroger card. It's

Need scrip over break? It will be available at the church. Please call the church office (263-2417) to verify their office hours.

THANK YOU to all who have used this program!! Scrip Rebates are out for April – October 31, 2009. Congratulations to all those who earned money off their tuition. **Some family earned a whole month of tuition FREE because of their participation in the SCRIP program!!** DID YOU??? Best of all, Bethel School earned \$9,000 in profit for the benefit of all the students (2008-09 school year). That does not include purchases made since 5/31/09. Thank you for using this program and helping us to help the school and church as well.

Merry Christmas to you and your family! From Nicole Gibson and Jen Behnke.

Hot Lunch Menu

Regular lunch: \$2.00

Extra entrée: \$1.50

Milk only: .40

Milk is included in hot lunch prices.

Week of December 14th-December 18th

Monday

Mini Corn Dogs
Mixed Vegetables
Cinnamon Apples

Tuesday

Chicken Nuggets and Bread
Broccoli
Mixed Fruit

Wednesday

Cheese Pizza
Corn
Mandarin Oranges

Thursday

Hot Sliced Ham and Roll
AuGratin Potatoes
Peaches and Cookie

Friday

Chicken Quesadilla
Green Beans
Pineapple